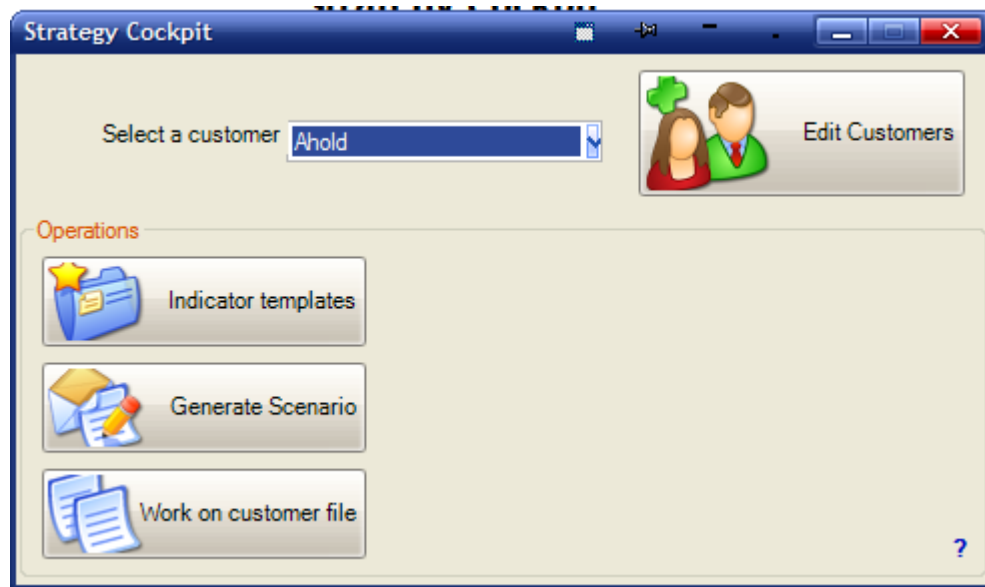


Strategy Cockpit

Strategy Cockpit is another project based on the Sunrise framework (running on .NET 2.0) . It is application for the financial industry which manages and represents custom indicators and financial scenarios.

Here are some screenshots:



Client

First Back Next Last Insert Delete Update OK Cancel

Name

Country City

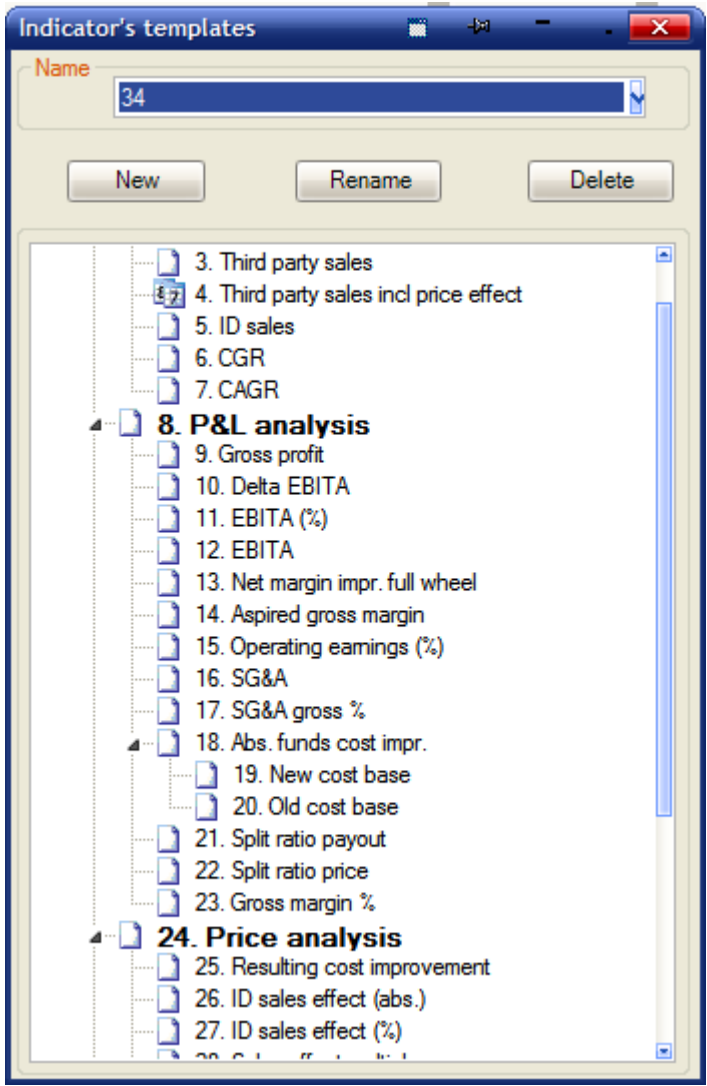
Street Postal Code

Phone Number Mobile

Fax Email

Indicator template

Remark



Generate SBU/Scenario for customer Ahold

Generate Base Case Generate scenario

Select time range: Month Quarter Year

From 01.2004 To 12.2005

Number of years for progression 5

Set date

SBU

Description	Pattern	From	To
▶ Albert Heijn	Year	1.2004	12.2005
Central EU	Year	1.2004	12.2005
Dutch	Year	1.2004	12.2005
Nordic	Year	1.2004	12.2005
SS-GL	Year	1.2004	12.2005
GC-Tops	Year	1.2004	12.2005
US Food	Year	1.2004	12.2005

Scenarios

- Ahold
- Scenario from Albert Heijn

Albert Heijn								Ahold							
	Pr %	1.2004	SU 2004	1.2005	SU 2005	Pr.2006	Pr.2007		Pr %	1.2004	SU 2004	1.2005	SU 2005	Pr.2006	Pr.2007
1. ASPIRATION 2010															
2. Sales analysis		12800	12800	12800	12800	12800			22800	22800	79000	79000	79000	79000	79000
3. Third party sales		6400	6400	6400	6400	6400			11400	11400	39500	39500	39500	39500	39500
4. Third party sales incl p		6400	6400	6344	6344	6344			11400	11400	39444	39444	39444	39444	39444
5. ID sales		0	0	56	56	56			0	0	56	56	56	56	56
6. CGR		0	0	0	0	0			0	0	0	0	0	0	0
7. CAGR		0	0	0	0	0			0	0	0	0	0	0	0
8. P&L analysis		0	0	0	0	0			0	0	0	0	0	0	0
9. Gross profit		0	0	0	0	0			0	0	0	0	0	0	0
10. Delta EBITA		0	0	0	0	0			0	0	0	0	0	0	0
11. EBITA (%)		34	50	50	67	67	89,78		50	50	67	67	89,78	89,78	
12. EBITA		0	0	0	0	0			0	0	0	0	0	0	0
13. Net margin impr. full		0	0	0	0	0			0	0	0	0	0	0	0
14. Aspired gross margin		0	0	0	0	0			0	0	0	0	0	0	0
15. Operating earnings (€)		0	0	0	0	0			0	0	0	0	0	0	0
16. SG&A		0	0	0	0	0			0	0	0	0	0	0	0
17. SG&A gross %		0	0	0	0	0			0	0	0	0	0	0	0
18. Abs. funds cost impr.		0	0	0	0	0			0	0	0	0	0	0	0
19. New cost base		0	0	0	0	0			0	0	0	0	0	0	0
20. Old cost base		0	0	0	0	0			0	0	0	0	0	0	0
21. Split ratio payout		0	0	0	0	0			0	0	0	0	0	0	0
22. Split ratio price		0	0	0	0	0			0	0	0	0	0	0	0
23. Gross margin %		0	0	0	0	0			0	0	0	0	0	0	0
24. Price analysis		0	0	0	0	0			0	0	0	0	0	0	0
25. Resulting cost improv		0	0	0	0	0			0	0	0	0	0	0	0
26. ID sales effect (abs.)		0	0	0	0	0			0	0	0	0	0	0	0
27. ID sales effect (%)		0	0	0	0	0			0	0	0	0	0	0	0
28. Sales effect multiple		0	0	0	0	0			0	0	0	0	0	0	0
29. Price improvement (€)		0	0	0	0	0			0	0	0	0	0	0	0
30. Price improvement (%)		0	0	0	0	0			0	0	0	0	0	0	0
31. Growth analysis		23	0	0	0	0			0	0	0	0	0	0	0
32. Private label		0	0	0	0	0			0	0	0	0	0	0	0
33. ID sales improvement		0	0	0	0	0			0	0	0	0	0	0	0
34. Non-ID sales		0	0	0	0	0			0	0	0	0	0	0	0
35. RONA analysis		0	0	0	0	0			0	0	0	0	0	0	0
36. Net working capital		0	0	0	0	0			0	0	0	0	0	0	0
37. Inventories		0	0	0	0	0			0	0	0	0	0	0	0
38. Investment analysis		0	0	0	0	0			0	0	0	0	0	0	0

